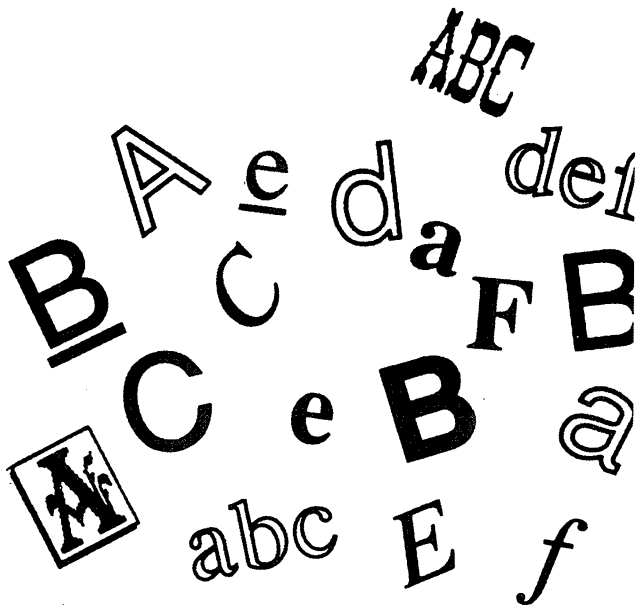


TIMEWORKS

For Commodore 64 and 128
Computers (64K, 40 Column)

User's Manual

Word Writer **4** **Font Pack**



Published by
Timeworks, Inc.

Try Our Other Programs

If you enjoy this program, try these other, equally stimulating programs from Timeworks, Inc.:

Cat. No.	Program
-----------------	----------------

Home Management:

6351	Data Manager 2
6353	Swiftax
6354	Swiftcalc
6360	Sideways
6361	Partner 64

Personal Improvement:

6105	The Evelyn Wood Dynamic Reader
------	--------------------------------





Following is a directory listing of FONT PACK.

Directory of FONT PACK

Side 1:

BATAVIA 18
BATAVIA 30
BATAVIA 40
EVANSTON 24
GLENCOE 14
GLENCOE 18
GLENCOE 40
ITASCA 24
ITASCA 36
JOLIET 24
JOLIET 30
JOLIET 48
KENILWORTH 18
KENILWORTH 24
ROSELLE 12
ROSELLE 24
WINNETKA 10
WINNETKA 12
WINNETKA 14

Side 2:

BARABOO 36
BARRINGTON 10
BARRINGTON 12
BARRINGTON 14
BARTLETT 30
BARTLETT 36
DUNDEE 14
DUNDEE 24
EDGEBROOK 09
EDGEBROOK 12
EDGEBROOK 18
GALENA 18
GALENA 24
GALENA 36
WASHINGTON 36
WHEATON 18
WHEATON 24
WHEATON 30
WHEATON 46

NOTE: The type fonts do not all contain the same characters. Some, like Bartlett and Evanston have no lowercase letters. Others, like Galena, contain no numbers. WW4 will substitute a dot or a “bullet” when it prints out. So, look carefully at the first printout of each font in this manual to learn what characters are available for that font.

Font Pack Installation Instructions

Welcome to the WORD WRITER 4 Power Users Club! The fonts included in FONT PACK are a special selection of contemporary, designer typefaces. FONT PACK is filled with headline, text and special effect typefaces—in a wide range of sizes.

With the addition of FONT PACK to your repertoire, you have greatly enhanced your printing capability. FONT PACK typefaces can be combined with all other WORD WRITER 4 fonts to give you even more ways to add impact and effectiveness to your presentations, advertisements, flyers—everything you print.

With FONT PACK you have very little new to learn. You install these fonts and then use them like the ones which came with your original WORD WRITER 4 program. Considering FONT PACK contains 38 different fonts, any of which can be underlined, boldfaced, italicized, superscripted or subscripted—or a combination like bold/italic/underlined—you have thousands of possibilities.

To get started using your new fonts, follow these instructions:

1. From the Font Library at the back of this manual, select which fonts you want to use.

2. Copy your selected fonts to your WW4 “WORK” disk, using the WORD WRITER 4 INSTALL program and the instructions in your WORD WRITER 4 program manual.
3. Install your new fonts using the FONTS/INSTALL option in the WORD WRITER 4 INSTALL program.

Remember, since you can only have ten fonts installed at any one time, you may need to deinstall some of your current fonts before installing any new ones. To deinstall any of the installed fonts, use the FONTS/DEINSTALL option in the WORD WRITER 4 INSTALL program.

Saving Installed Font Tables

WORD WRITER 4 normally saves the table of installed fonts along with the document. If you set up a document with different fonts installed, anytime that document is loaded, its font table will replace the current one. There are two ways to get the original settings back:

- 1.) **Reloading Word Writer 4**—If you create a blank document after setting up your fonts, then, any time you reload the blank document, the font table you saved with it will be reloaded as well.
- 2.) **Merging the file**—The file will be “loaded,” but the font table information will not. This is useful if you want to look at a file but do not want to disrupt the existing font information. (If you try to print, the existing font table information will be used.)

The Font Pack Library

BATAVIA 18

abcdefghijklmnopqrstvwxyz

1234567890

ABCDEFGHIJKL MNOPQRSTUVWXYZ

!.,#\$%^&*()_ - += { } [] ; : " ' < , > . | \ ~

BATAVIA 18

Side 1

BATAVIA 30

BATAVIA 30

Side 1

BATAVIA 40

BATAVIA 40

Side 1

EVANSTON 24
..... 1234567890
ABCDEFGHIJKLM
NOPQRSTUVWXYZ
!@#%&*()_+={}[]:;'"<>.\`

EVANSTON 24

Side 1

GLENCOE 14
abcdefghijklmnopqrstuvwxy
z
1234567890
ABCDEFGHIJKLMN
OPQRSTUVWXYZ
!@#%&*()_+={}[]:;'"<>.\`

GLENCOE 14

Side 1

LENCOE 18

LENCOE 18

Side 1

LENCOE 40

LENCOE 40

Side 1

ITASCA 24

oooooooooooooooooooooooooooooooo

1234567890

A B C D E F G H I J K L M

N O P Q R S T U V W X Y Z

! " # \$ % & * () _ - + = " " [] ; " " < > " " \ " "

ITASCA 24

Side 1

ITASCA 36

ITASCA 36

Side 1

JOLIET 24

abcdefghijklmnopqrstuvwxyz I234567890

A B C D E F G H I J K L M N O P

Q R S T U V W X Y Z

!@#\$%^&*()-+={}|:;'"<,>.\`~

JOLIET 24

Side 1

JOLIET 30

JOLIET 30

Side 1

JOLIET 48

JOLIET 48

Side 1

KENILWORTH 18

abcdefghijklmnopqrstuvwxy 1234567890

ABCDEFGHIJKLMN OPQRSTUVWXYZ

!@#\$%^&()_+={}|:;'"<.>~`*

KENILWORTH 18

Side 1

KENILWORTH 24

KENILWORTH 24

Side 1

ROSELLE 12

abcdefghijklmnopqrstuvwxy 1234567890

ABCDEFGHIJKLMN OPQRSTUVWXYZ

!@#\$%^&*()_+={}|:;'"<.>~`

ROSELLE 12

Side 1

ROSELLE 24

ROSELLE 24

Side 1

WINNETKA 10

abcdefghijklmnopqrstuvwxyz 1234567890

ABCDEFGHIJKLMNPOQRSTUVWXYZ

!@#\$\$%^&*()_+={X}];" '<, > . | \ ^

WINNETKA 10

Side 1

WINNETKA 12

WINNETKA 12

Side 1

WINNETKA 14

WINNETKA 14

Side 1

BARABOO 36

abcdefghijklmnopqrstuvwxy^z

1234567890

ABCDEFGHIJKLMN^{OP}QRSTU^{VW}XYZ

!@#\$%^&*[]_--+={}|:;'"<>.\~

BARABOO 36

Side 2

BARRINGTON 10

abcdefghijklmnopqrstuvwxy^z 1234567890

ABCDEFGHIJKLMN^{OP}QRSTU^{VW}XYZ

!@#\$%^&*()_--+={}|:;'"<>.\~

BARRINGTON 10

Side 2

BARRINGTON 12

BARRINGTON 12

Side 2

BARRINGTON 14

BARRINGTON 14

Side 2

BARTLETT 30



1234567890

ABCDEFGHIJKLM

NOPQRSTUVWXYZ

! . # \$ % ^ & * () _ - + = . . [] : ;

“ ” ‹ › • \ . .

BARTLETT 30

Side 2

BARTLETT 36

BARTLETT 36

Side 2

DUNDEE 14

abcdefghijklmnopqrstvwxyz

1234567890

ABCDEFGHIJKLMNPOQRSTUVWXYZ

!@#%&*()_+={}[];'<>.\~

DUNDEE 14

Side 2

DUNDEE 24

DUNDEE 24

Side 2

EDGEBROOK 09

abcdefghijklmnopqrstvwxyz 1234567890

ABCDEFGHIJKLMNPOQRSTUVWXYZ

!@#%&*()_+={}[];'<>.\~

EDGEBROOK 09

Side 2

EDGEBROOK 12

EDGEBROOK 12

Side 2

EDGEBROOK 18

EDGEBROOK 18

Side 2

G A L E N A ..
A B C D E F G H I J K L M N O P Q R S T U V W X Y Z
A B C D E F G H I J K L M
N O P Q R S T U V W X Y Z
.....-..... :

GALENA 18

Side 2

G A L E N A ..

GALENA 24

Side 2

G A L E N A ..

GALENA 36

Side 2

WASHINGTON 36

.....

1234567890

ABCDEFGHIJKLM

NOPQRSTUVWXYZ

! " # \$ % ^ & * () _ - + = . :

! " # \$ % ^ & * () _ - + = . :

WASHINGTON 36

Side 2

WHEATON 18

abcdefghijklmnopqrstuvwxy 1234567890

ABCDEFGHIJKLMNPNPQRSTUVWXYZ

!@#\$%^&*()_ - + = { } [] ; ' " < , > . \ /

WHEATON 18

Side 2

WHEATON 24

WHEATON 24

Side 2

WHEATON 30

WHEATON 30

Side 2

WHEATON 46

WHEATON 46

Side 2

Personal Computer Software

Timeworks has put the **personal** in Personal Computer Software.

We have pooled creativity, technical knowledge, manufacturing expertise, and conscientious quality control to bring to you the versatility and reliability demanded by the computer generation.

We have dedicated ourselves to the development of programs which meet the personal productivity needs of the computer user. Each program is designed and tested with the user's needs foremost in our minds.

Timeworks programs utilize maximum computer capacity. Our manuals are user-friendly, written in plain easy-to-follow language, then carefully edited to provide continuity and correlation with the program.

If superior design, maximum capability, effective graphics and dependable performance are important to you, look into Timeworks **personal** computer software.

You'll be amazed at the difference a **personal** commitment can make.

For other Timeworks software see your local Timeworks dealer, or contact Timeworks, Inc., for a list of our latest software.

Timeworks, Inc.
444 Lake Cook Rd.
Deerfield, IL 60015-4919
(312) 948-9202

Timeworks, Inc.
444 Lake Cook Road
Deerfield, IL 60015-4919