

FORECAST!™

Your At-Home Weather Station.

Predict tomorrow's weather with amazing accuracy!

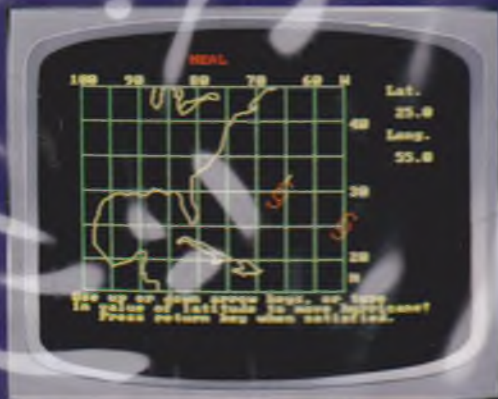
Master the scientific methods used by professionals to track storm fronts, chart weather patterns and play weather-wise!
By Irv Gikolsky, Tore Jakobsen, Neal Townsend and Jim Witt.



For ages 12 and up.

CBS
SOFTWARE

FORECAST!™



Now you can discover and use the science of meteorology with FORECAST!, your at-home weather station! Unlock the mysteries behind weather prediction as you actually chart weather patterns, track storm fronts and develop an understanding of how atmospheric conditions interact to produce the weather.

FORECAST! is divided into five activity tools. When you feed this morning's weather conditions into the *Weather Forecaster*, you'll be able to predict the weather for this afternoon, tonight and tomorrow. The *Weather Calculator* makes it easy to understand the types of measurements used in forecasting. The *Weather Keeper* is your own daily log of what Mother Nature has been up to. The *Weather Tracker* allows you a glimpse of the weather for almost anywhere in the country at any time of year and the *Weather Tracker* lets you follow the patterns of hurricanes and predict where they'll strike next!

FORECAST! was developed by nationally recognized, professional meteorologists who employ the same scientific principles to predict the weather. More importantly, it provides an explanation for the weather in addition to the weather itself. With FORECAST!, you'll finally be able to sit through a TV weather report and know exactly what they're talking about!

Features:

Computerized Personal Weather Log

Allows you to store and print your own weather data.

National Weathercast Data

Provides weather information for every region of the nation, any time of year. Find out if you'll need an umbrella or sunglasses on your next vacation or business trip.

Graphic Illustrations and Models

Present data in easy-to-understand tables and charts and familiarize you with forecasting terminology and instruments.

Comprehensive Program Guide

Clearly explains the language of forecasting, aids in developing a thorough understanding of the causes and effects of weather and provides extensive resource materials for further study and exploration of earth science topics.

Professionally Developed and Researched for Accuracy

The national weather statistics and data in this program are based on 10 years of compilations by experts in the atmospheric sciences.

Irv Gilofsky, known to New Yorkers as WCBS-TV's "Mr. G," has been a forecaster and on-air personality since 1977, and taught earth science and history for 10 years at Albert Einstein School in the Bronx, New York. Tore Jakobsen and Jim Witt are co-founders of Fleetweather Inc., a meteorological consulting firm. Mr. Jakobsen has been a weathercaster since 1969 and is past Chairman of the Ethics committee of the National Weather Association. Mr. Witt has been a teacher, chairman and district science coordinator for the Lakeland (NY) Schools and has also taught meteorology at Columbia University and for NASA. Neal Townsend is currently Chairman of the Math and Computer Science departments of the Lakeland Schools. He has taught professionally for 15 years in earth science, physical geology and computer programming.

Program © 1984 Science Software Associates. All Rights Reserved.
© 1984 CBS Software, A Unit of CBS Inc., Greenwich, CT 06836.
All Rights Reserved.

Apple®, Atari® and IBM® are registered trademarks of Apple Computer, Inc., Atari, Inc. and International Business Machines Corp., respectively. Commodore 64® is a trademark of Commodore Electronics Ltd. Made in U.S.A. 3L-0203

CBS
SOFTWARE